



GREATER BOSTON POLICE COUNCIL

****BAPERN****

Boston Area Police Emergency Radio Network

QUICK REFERENCE SHEET

BAPERN CHANNEL PLAN: Member Agencies are required to simultaneously monitor Area-Wide 3 and their District Channel.

Channel 1 is reserved for each agency's primary channel.

Channel 2 is recommended for the District channel, unless needed for a secondary local frequency.

Channel 3 - "Area-Wide 3" is a system-wide channel reserved for specific and relevant law enforcement notifications that are of interest **beyond a local district**. This channel can be heard by all agencies. Use Area-Wide 3 in an emergency situation, such as a major crime, pursuit, officer in need of assistance, etc.

Channel 4 - "Area-Wide 4" is a system-wide channel reserved to provide communication for investigative operations, special local events, and to serve as a back-up to Area-Wide 3, the District Channels, and local systems. Permission from GBPC is required prior to using Area-Wide 4 for pre-scheduled events and operations.

District Channels 5-11 – District Channels provide communications for specific and relevant law enforcement notifications that are of interest **within a local district only**. The seven District Channels are:

Channel 5 - North District	(Hamilton PD is District Coordinating Department)
Channel 6 - South District	(Norwood PD is District Coordinating Department)
Channel 7 - West District	(Wellesley PD is District Coordinating Department)
Channel 8 - Central District	(Arlington PD is District Coordinating Department)
Channel 9 - Northwest District	(Bedford PD is District Coordinating Department)
Channel 10 – Southeast District	(Marion PD is District Coordinating Department, with assistance from the Plymouth County Sheriff's Dept.)
Channel 11 – Southwest District*	(Bristol Sheriff is District Coordinating Department)

** The Bristol County Sheriff's Department currently operates the Southwest District Channel, not GBPC.*

Channels 12 is used for the District Digital Tactical channels.

Channels 13-15 are set aside for local discretion.

Channel 16 is reserved for each agency's primary channel.

BAPERN USE AND PROCEDURES

- ! Must use plain English at all times. No agency-specific "10-codes" or discipline specific jargon.
- ! Must use a call sign including the city/town, agency, and user assigned ID.
- ! Notifications of police details are prohibited on BAPERN channels 3 through 11.
- ! Any misuse of BAPERN should be immediately reported to the GBPC for investigation.
- ! Always remember to pause momentarily after pressing the transmit button to avoid cutting off the beginning of your transmission.

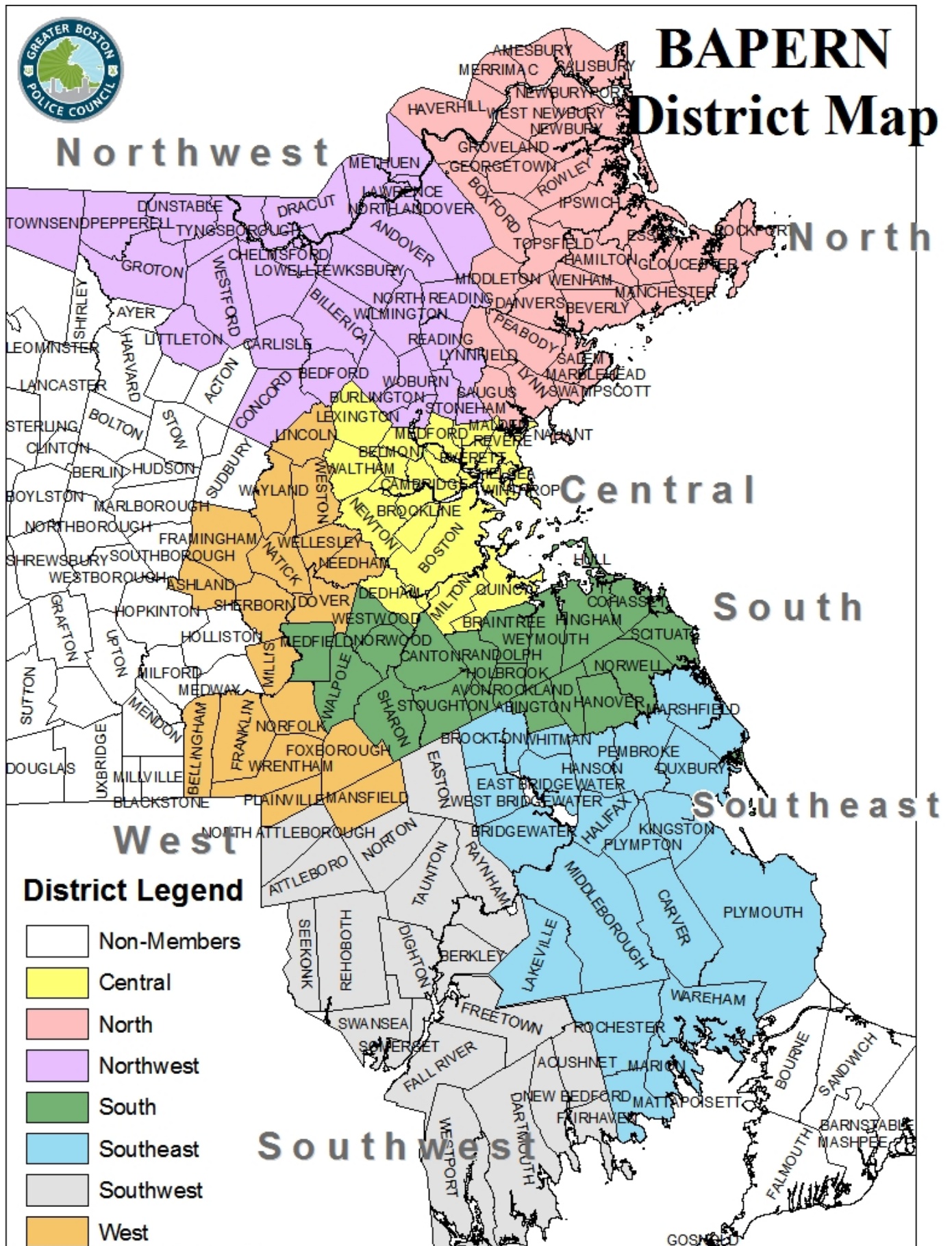
ROLL CALLS

- ! Area Wide 3 Roll Call is conducted by the District Coordinators each Monday at approximately 1030 hours, one district tested each week (i.e., you are tested on AW3 once every 6 weeks).
- ! District Roll Calls (one scheduled and one random) are conducted by the District Coordinating Departments once per month on the District Channel.

Questions? Contact your District Coordinating Department or Diana Chidsey (GBPC) at dchidsey@verizon.net or (978)360-4481



BAPER District Map



Greater Boston Police Council, March 2013

Questions? Contact your District Coordinating Department or Diana Chidsey (GBPC) at dchidsey@verizon.net or (978)360-4481